

heartlandLINK

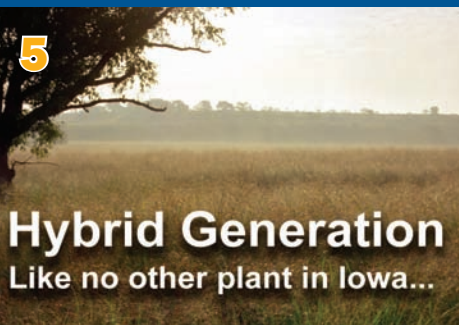
March/April 2009

Energy Policy 101

3 An ever-growing list of terms and acronyms have a very real impact on electric bills at the actions of a new administration and Congress.



Renewable Portfolio Standards
Laws passed by 28 states and some municipally owned utilities, some mandating utilities to add increasing amounts of renewable energy by a certain date. Eighteen



5
Hybrid Generation
Like no other plant in Iowa...



12



Our Energy, Our Future
A Dialogue With America

Co-ops and Congress Together we can keep electricity affordable

America's families are facing tough economic times. Many struggle to afford the basics: food, housing, and energy. In fact, the cost of residential electricity climbed an average of 26 percent between 2002 and 2007, and it is projected to go even higher. As if that wasn't bad enough, today's electricity supplies won't be able to keep pace with future demand.

Continued on page 2

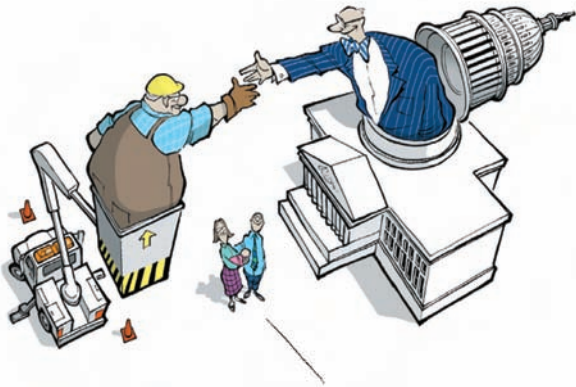


A Touchstone Energy® Cooperative

Inside

- Energy Policy 1013**
- Community Reinvestment Fund5**
- Nominating Committee Plans for June Elections7**
- Iowa Second in Nation in Wind Power Production...10**

Co-ops and Congress, cont. from page 1



“This is the kind of connection we need.”

The Our Energy, Our Future (OEOF) campaign was launched in February 2008 by the National Rural Electric Cooperative Association (NRECA). The campaign’s purpose is to create a dialogue about energy sources, supply, and cost between Americans and elected officials. As elected officials in Washington, D.C., are poised to make important policy decisions that will determine our nation’s energy future, this type of communication from consumers is critical to help guide lawmakers in a sound direction.

Already, hundreds of thousands of electric cooperative consumers have sent more than 1.5 million messages to their members of Congress. Through this outreach, co-ops have shared our insight drawn from decades of offering safe and reliable electricity at affordable rates: service that always makes consumers—not the bottom line—priority one.

ECI REC helped to sign up nearly 400 people with the OEOF campaign: 354 member/consumers and 30 community group members.

In 2009, consumers in the campaign will be asked to engage their elected officials in a dialogue about their personal struggles with

Table of Contents

Join Our Energy, Our Future 1-3
 ECI REC at Legislative Activities..... 2
 Sutherland Coal Plant Progress..... 4
 2008 Great for RECare..... 4
 ECI REC Gives Back 5
 Grain Bin Safety Regulations..... 6
 New Iowa Inspection Law 6
 Nominating Committee Meets..... 7
 Winter Moratorium Ends..... 7
 CIPCO Explains Electricity Generation 7
 Message from the CEO 8
 CIPCO Notes Reasons for Increase 8
 Call-Service Responds to Members 9
 2008 Outage Report 9
 Be a Savvy Consumer 9
 Iowa Near Top in Wind Energy..... 10
 ECI Sells Efficient Water Heaters 10
 Spot the Symbol Winners..... 11
 Recipe 11
 Classified Ads 11
 Questions or Complaints..... 12
 Statement of Non-Discrimination 12

NOTICE - Daylight Saving Time begins March 8.



Know what's below.
Call before you dig.

800-292-8989

www.iowaonecall.com

ECI REC Present at Area Legislative Events

2009 Iowa Electric Cooperative’s Legislative Reception

The January 13 Iowa Association of Electric Cooperatives welcome back reception for legislators, held at the Quality Inn and Suites in Des Moines, attracted more than 130 cooperative representatives including directors, managers, and employees.

ECI’s Harry Ruth, Steve Marlow, and Greg Pavelka, as well as several ECI directors attended the event.

Grassroots Activities



Rep. Kerry Burt

At a recent legislative night at the Five Sullivan Brothers Convention Center in Waterloo on January 6, legislators and cooperative representatives talked about Iowa’s budget challenges and the need to assist last year’s victims of the tornado and floods.

Representing ECI REC at the meeting were Board of Directors members Steve Rau, Don Shonka, and Jim Alberts; Operations Manager Steve Marlow; and CEO Harry Ruth. Representatives Doris Kelley, Bob Kressig, Andrew

Wenthe, Deb Berry, and Kerry Burt, and Senators Jeff Danielson and William Heckroth were present representing the State’s government.

“I had the opportunity to introduce myself to the new legislator, Kerry Burt, who replaced Tammy Wiencek after November’s elections,” said CEO Ruth. “Also, Rich Kurtenbach, a union leader for the International Brotherhood of Electric Workers 288, made positive comments about our Cooperative.”

affordability. The intent of the 2009 strategy is to personalize for our elected officials the critical issue of affordability. The OEOF Web site will be refocused to emphasize affordability, using consumer testimonials) to make the campaign more personal, and bring individual struggles with affordability to the center of the campaign.

If you are concerned about the affordability of electricity and haven't already done so, please get involved in the campaign by asking your representatives on Capitol Hill one important question: Are you willing to work with electric cooperatives like ECI REC to ensure our nation has reliable power at a price consumers can afford? The stakes are too high to miss this opportunity to help secure your energy future.

To learn more about how you can begin a dialogue with your elected officials, please visit www.ourenergy.coop today. Together we can keep electric bills affordable.

You can also fill out the form on the right and return it to:

ECI REC
Box 248
Urbana, IA 52345



Our Energy, Our Future
 A Dialogue With America

Energy Policy 101

An ever-growing list of terms and acronyms describe aspects of public policy that can have a very real impact on electric bills at home. As energy policy gets shaped through the actions of a new administration and Congress, expect to hear more about the terms below.



Renewable Portfolio Standards (RPS)

Laws passed by 28 states and Washington, D.C., (as of 2008) that require investor-owned utilities, some municipal electric systems, and electric generation suppliers to add increasing amounts of 'clean and green' energy to their power supply mix by a certain date. Eighteen states call for electric co-ops to meet RPS mandates.



Clean Renewable Energy Bonds (CREBs)

Federal bonds that act as interest-free loans and provide not-for-profit electric co-ops with a way to invest in renewable generation. Co-ops had used \$450 million in CREBs for renewable generation projects by the end of 2008.



Production Tax Credit (PTC)

A federal tax incentive designed to support the introduction of new renewable energy sources (such as wind, geothermal, biomass, and small hydropower) by investor-owned utilities. Electric co-ops are not eligible for the PTC, but can use CREBs for the same purpose.



Cap and Trade

A system of regulating greenhouse gases (GHG), like carbon dioxide, where each source (like a power plant) has a limit placed on the amount of gases it can release—the *cap*. Those who emit less than the cap can sell their extra allowances to those who are not able to make reductions as easily—the *trade*.



Carbon Tax

A proposed tax on energy sources that emit carbon dioxide, based on the carbon content of a particular fuel, meant to curb both carbon emissions and consumption of coal, natural gas, and oil. The resulting revenue could be used to fund environmental projects, reduce other taxes, or returned to taxpayers via rebates.

Source: National Rural Electric Cooperative Association

During the next year, please send electronic messages on my behalf to my members of Congress regarding the questions outlined above.

NOTE: We cannot forward your input to Congress unless all of the following blanks are completed.

Please print

Name _____

E-Mail _____

Home Address _____

City, State, ZIP _____

Co-op Name: East-Central Iowa Rural Electric Cooperative (ECI REC)

Signature _____ Date _____

IUB to Determine the Future of the Coal-Fired Sutherland Generating Station



On January 27, the construction of Sutherland Generating Station Unit 4 (SGS 4) seemed to be taking a few steps closer to reality. The Iowa Utilities Board (IUB), which granted conditional approval to the generation certificate in August of 2008, denied a request

from the Iowa Office of Consumer Advocate (OCA) for a rehearing on that approval decision.

The plant, which is being built by Interstate Power and Light (IPL), a subsidiary of Alliant Energy, will burn coal and use supercritical technology. In granting its original approval, the IUB also required the plant to burn a certain percentage of biomass and renewable fuels such as switchgrass.

However, the IUB written decision and order issued on

February 13 regarding IPL's rate-making principles appears to decapitate steps gained during the January hearing, specifically in the way it addresses IPL's return on equity. This decision depended partially on load forecasts and operational and financial models.

At this time, there are three remaining major state regulatory approvals needed by IPL to proceed with the construction of the plant.

1. The generation certificate to construct and operate the plant must be formally approved. Parties have 30 days from the January 27 order to file a petition for judicial review.
2. The rate-making principles must be approved. Parties may file a petition for judicial review within 30 days of the IUB original decision or the most recent hearing on the issue.
3. The approval of the air permit is the final step before construction begins. The Iowa DNR's Air Quality Bureau has finalized a draft permit, and on February 16 the 30-day window for public comment opened. There will also be two public hearings.

ECI REC will continue to keep its member-consumers updated on the progress of this important project. If you are interested in reading all 16 pages of the IUB's order, please visit the following website: <https://efs.iowa.gov/efiling/groups/external/documents/docket/001761.pdf>.

In Your Community

It's Official! ECI REC Members' Support of RECare Increased 94%

In 2007-08, 99 members gave \$6,936.34 to assist 33 needy families.

- District 1, Benton-area members gave \$3,996.34
- District 2, Buchanan-area members gave \$2,940.00.
- In 2006-07, 67 members gave \$3,573.00 that assisted 28 families.

As reported in the September/October *Heartland Link*, ECI REC members provided outstanding support to the RECare program in 2007-08 with total contributions of \$6,936.34.

"These increased contributions couldn't have come at a better time," said Teresa Floyd, ECI REC office manager. "It is very humbling to be able to report how our members support and care for others.

According to Floyd, the more than 94 percent increase from 2006-07's contributions of \$3,573 really made a difference. "The number of families receiving assistance this year is 33—5 more than last year!"

These members will receive approximately \$107 per household. To date, this is the highest number of families helped from the RECare fund.



Tanner Haars and the new Urbana welcome sign



ECI REC assisted Independence in building its new library, completed in September 2008.

Cooperative Support for Our Communities Made Possible With Reinvestment Fund

When ECI REC members fail to claim patronage dividends, the Cooperative puts the money to work in the communities it serves. In 2008, ECI REC donated \$52,913 to various organizations and projects, and 80 percent of that was unclaimed dividends from the Community Reinvestment Fund.

ECI REC invested in:

- 6 community groups and organizations
- 4 economic development groups
- 26 youth and education groups
- 6 health and safety organizations

The Jesup prom committee received support from the Community Reinvestment Fund. “Because of your generosity, we were able to provide a safe, entertaining, after-prom celebration for the students of Jesup High School,” said Sandy Joblinske, president of the Jesup After-Prom Committee. “Your commitment to our community is greatly appreciated and we would like to thank you for supporting this wonderful event.”

Vinton-Shellsburg kids also experienced a fun post-prom celebration thanks in part to ECI REC. The VSHS prom committee wrote: “Because of your donation, our kids were provided a fun-filled and memorable evening. Your support is greatly appreciated.”

In addition to Urbana businesses and organizations, ECI helped resident Tanner Haars on his quest to become an Eagle Scout. The Cooperative provided funding to help Tanner achieve his goal of building a welcome sign for Urbana. The completion of the sign was a big step for Tanner toward earning the Arrow of Light award, Cub Scouting’s highest badge. Tanner will receive the award in a spring ceremony.

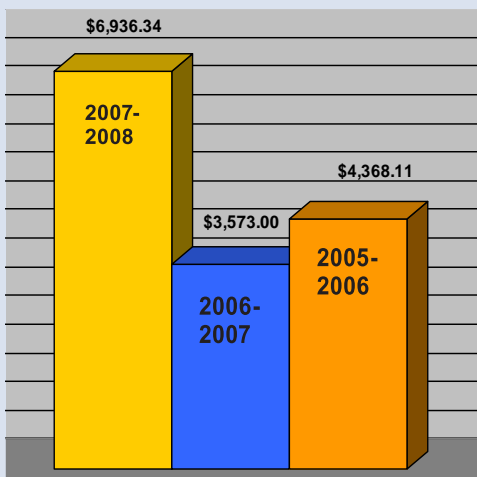
ECI REC also sent two high-school juniors on an educational and entertaining, expenses-paid trip to Washington, D.C., to participate in the National Rural Electric Cooperative Association Youth Tour.

“Thank you all so much for giving me the opportunity to go to Washington, D.C.,” said 2008 participant Michelle Hunter. “It was an experience that I would never give up! I can’t say how thankful I am that you sponsored me to go on this trip of a lifetime. I have memories and friends that will last forever.”

Carly Kelty, the second 2008 Youth Tour participant, shared Michelle’s gratitude. “Seeing so many of our country’s memorials, monuments, and important buildings in just under a week was astounding. I hope that the RECs of Iowa continue to sponsor high-school student tours of our capital. I learned so much about how rural electric cooperatives have positively influenced the United States.”

ECI REC looks forward to supporting more community groups in 2009. “As projections for the economy continue to cause concern, our Cooperative is glad to provide much-needed financial assistance to worthy community groups and projects,” said CEO Harry Ruth.

Member-Contributed Dollars



New Grain Bins Must Meet Clearance Regulations

One step in the process of planning a new grain bin should be a call to ECI REC. Our team is familiar with the State of Iowa’s electrical clearance regulations for grain bins, and will provide assistance in creating a safe environment for everyone working and living around the bins.

Iowa has specified different standards for bins filled by portable and permanent augers, conveyors, and elevators. The drawings accompanying this article identify the specific clearances required for both scenarios.

According to the Iowa Electric Safety Code found in Iowa Administrative Code Chapter 199-25.2(3) b. An electric utility may refuse to provide electric service to any grain bin built near an existing electric line which does not provide the clearances required by The American National Standards Institute (ANSI) C2-2007 “National Electrical Safety Code,” Rule 234F. This paragraph “B” shall apply only to grain bins loaded by portable augers, conveyors, or elevators and built after September 9, 1992, or to grain bins loaded by permanently installed augers, conveyors, or elevators built after December 24, 1997 (*As adopted by the Iowa Utilities Board*).

ECI REC is required by the Iowa Utilities Board to provide this annual notice to farmers, farm lenders, grain bin merchants, and city and county zoning officials. If you have any questions concerning clearance regulations, please call your local electric cooperative.

Fig. 234-4(b): Clearance Envelope for Grain Bins Filled by Portable Augers, Conveyors, or Elevators

Source: National Electrical Safety Code: C2 2007, page 120

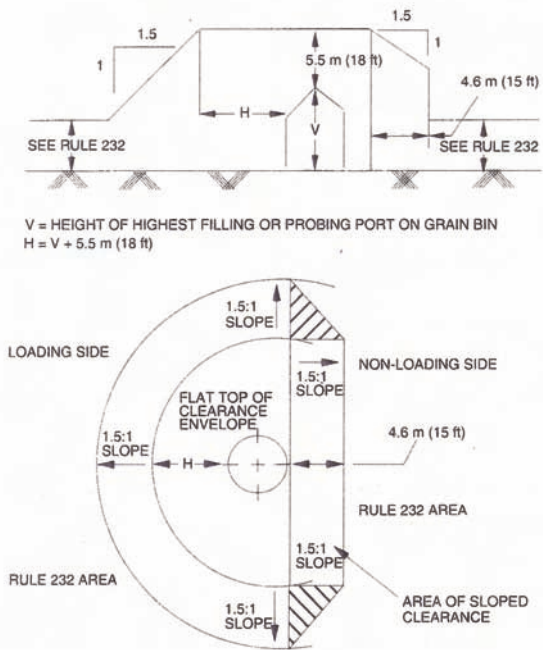
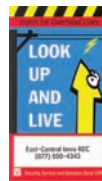
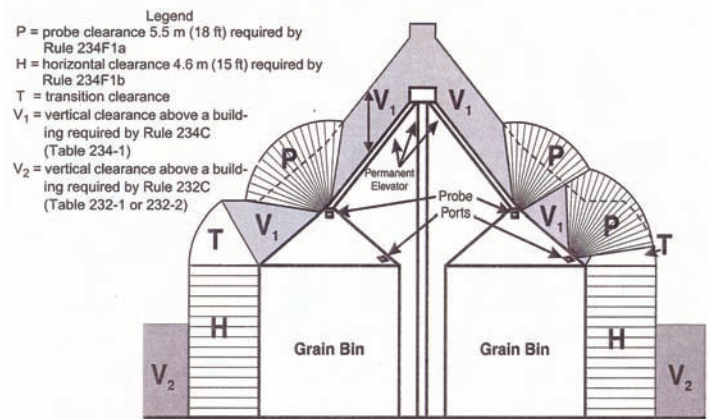


Fig. 234-4(a): Clearance Envelope for Grain Bins Filled by Permanent Augers, Conveyors, or Elevators

Source: National Electrical Safety Code: C2 2007, page 120



Free stickers for grain bins is available while supplies last. Call 877-850-4343 or stop in our Urbana Office.

New Iowa Law Requires Inspections of New Connections



Effective March 1, 2009, the state of Iowa must inspect newly installed electric service before your electric cooperative can energize it. The new law also requires state inspection before your electric co-op can re-energize existing electric service.

The new requirements are part of Iowa’s new State Electrical Inspection Program passed by the Iowa General Assembly in 2007. If the state does not perform an inspection within three days of the request being made, your electric co-op can energize the electric service.

Some questions remain about the program, and you can count on your electric co-op to keep you informed about changes when the state provides that information. Contact ECI REC at 877-850-4343 with any questions.

2009 Nominating Committee Gets to Work

The 2009 Nominating Committee met at ECI REC’s administrative headquarters office in Urbana, Iowa, on January 15. The first order of business was to confirm the members of the committee. Elections were also held for the officers of chairman, vice-chairman, and secretary of the subcommittee. Peter Schmitz was elected chairman, Dave Peck will serve as vice chairman, and James Hemsath will be secretary.

This year, new board members will be chosen for board districts 21, 24, and 27. “It’s important to find at least two members to run for each open position on the board,” emphasized CEO Ruth.

CEO Ruth also reviewed some of the critical issues facing East-Central Iowa REC in 2009. “ECI REC needs to implement a rate increase, and we plan to continue encouraging state and federal government to adopt balanced energy policies to ensure that electricity continues to be reliable and affordable. We plan continued investment in our distribution system, and we will defend the Cooperative’s service territory,” said CEO Ruth.

The nominating committee also heard about key projects that the ECI REC staff has wrapped up or is working on. They include: installation of new computer software for the SCADA system and GIS database, a new high school scholarship program, the introduction of a new corporate logo, assessment of our energy efficiency programs, and preparation for the new Monsanto corn seed processing plant to be built in Independence. ❖

The next meeting will be held February 19, when the names of members nominated to run from the three director board districts will be submitted. Members will vote on these nominations, and if approved, those names will be listed on the June 2009 ballots.



ECI REC members will cast their votes for new directors at the 2009 Annual Meeting, to be held Thursday, June 18, at the newly built Vinton-Shellsburg High School.

Committee Members

- Serving District 1, Benton County area are:**
- Robert Smith, La Porte City, board district #11
 - Robert Umbdenstock, Vinton, board district #12
 - Mike Silhanek, Elberon, board district #13
 - Larry Cherven, Van Horne, board district #15
 - James Hemsath, Watkins, board district #17

- Serving District 2, Buchanan County area are:**
- Howard Miller, Independence, board district #21
 - John Liebold, Jesup, board district #23
 - Peter Schmitz, La Porte City, board district #24
 - Jerry Cole, Fayette, board district #26
 - David Peck, Winthrop, board district #27

Attention: Winter Moratorium Ends April 1

Please take note that the winter moratorium ends April 1, 2009. If your account(s) is past due and you have not made payment arrangements by March 31, you will be subject to disconnection of your electric service.

To avoid disconnection, you must pay your electric bill in full by April 1 or request a reasonable payment agreement for your past due account(s).

Call our office at 319-443-4343 or toll-free at 877-850-4343 if you have any questions.

CIPCO Directors Talk Electricity Generation

As a member-consumer, you should know that your Cooperative purchases electricity from Central Iowa Power Cooperative (CIPCO). CIPCO is Iowa’s largest cooperative energy producer. Approximately 95 percent of the power provided to members is generated right here in Iowa. CIPCO provides a dependable energy supply and contributes to the growth of our local economy by keeping good-paying jobs here at home.

CIPCO’s diversified energy portfolio—including coal, nuclear, hydro, wind, natural gas, and oil energy resources—largely contributes to reliability. A part of fuel diversity is developing varying types of energy resources.

In order to ensure a reliable source of power is always available, CIPCO relies on what is referred to as baseload generation. With demand for electricity continuing to grow at a steady pace, we are making investments in baseload facilities. Recent developments include coal-fired projects like the Walter Scott Unit 4 generating station near Council Bluffs and the proposed Sutherland Generating Station Unit 4 near Marshalltown.

It is the job of ECI REC and CIPCO to make sure you have light and heat when you need it, whether it is for your farm operation, small business, manufacturing plant, or family home. Continuing to expand energy resources will allow the cooperatives to continue to keep up with the changing customer needs.

Message From the CEO

2008 Ends on a Strong Note



CEO
Harry Ruth

ECI REC did not expect 2008 to be a good year. Our 2008 budget projections suggested that we would not meet our long-term financial targets, and much of the year our sales and margins did not even match budget projections. In fact, in the last Heartland Link, we cautioned that ECI REC could lose nearly \$500,000 in 2009 without a rate increase.

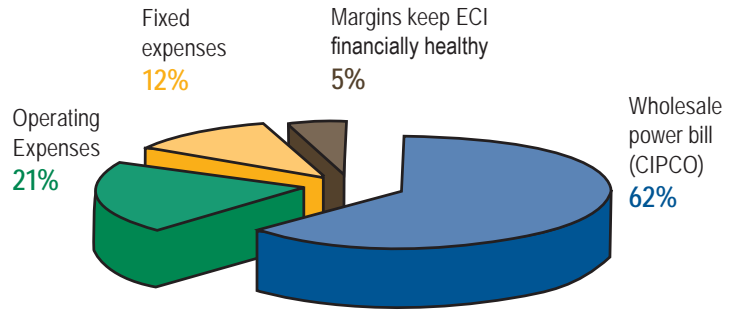
However, thanks to a strong demand for electricity due to grain drying in November and cold weather in December, ECI REC had the two strongest monthly sales in its history, and we exceeded our budget projections. Our sales totaled 190,294,291 kilowatt-hours (kWh), 5.1 percent better than 2007. Total margins were approximately \$951,000, better than budgeted but significantly below the results of the past five years.

The chart above shows how we spent your money. Sixty-four percent (64%) of our revenues paid our wholesale power bill from CIPCO, 22% went to operating expenses, 12% went to fixed expenses like depreciation and interest on long-term debt. Five percent (5%) were margins needed to keep the Cooperative financially healthy.

Unfortunately, outages far exceeded our averages. Due to the Parkersburg tornado that ripped through northern Buchanan County in May, the flooding in June, and additional bad weather in July, our outages averaged 6.1 hours per account for the year. That was better than 2007 when the February ice storm caused outages lasting for as long as 9 days, but it was much worse than our goal of limiting outages to an average of 3 hours per account per year.

Unfortunately the Cooperative will not be able to forgo a rate increase this year. The cost of wholesale power, storm damage repair, maintenance, and wages have increased costs and eroded margins for several years in a row. The average revenue ECI REC received for each kilowatt-kWh was less in 2008 than in 2005. Increasing sales have given us the additional revenue needed to cover increasing costs until now. However, we will not meet the financial requirements dictated by our loans unless we raise rates.

The exact amount of increase has not yet been determined. At the time of publication, a cost-of-service



How your dollars were spent in 2008

study was being conducted by a consultant. The increase is anticipated to take effect in April when usage drops as winter comes to an end.

As the country struggles with a deepening recession, be assured your Cooperative knows times are getting tough for our members. The increase will not be larger than it needs to be, and ECI REC may implement part of the rate increase in 2009 and part in 2010.

CIPCO Notes Reasons for Increase

Like ECI REC, CIPCO is a member-owned, not-for-profit cooperative. Neither benefits from increased prices for electricity. Any savings or additional revenue from the sale of electricity is returned our member-consumers.

CIPCO estimates that the rate at which ECI purchases this electricity will increase almost 7 percent in 2009. There are several factors leading to higher prices.

The cost of coal has nearly doubled in the last four years. More than 75 percent of the electricity generated in Iowa comes from burning coal. The cost of constructing a new coal-burning power plant has also more than doubled.

Recent talks of regulating carbon emissions from coal plants has caused a shift toward natural gas. As a result of increased demand, the price of natural gas has shot up in recent months as well.

Looking forward, there is no question the cost of energy is going to continue to increase—the question is how much. In Iowa, legislation has been introduced to mandate a certain percentage of renewable energy and require a specific standard for energy efficiency. Nationally, legislation is being considered that will increase the cost of generation from both coal and natural gas in an attempt to reduce greenhouse gas emissions. Some experts predict this type of legislation could double our electric rates within ten years.

Member-consumers can communicate with legislators about the need for a balanced, affordable energy policy by joining the Our Energy, Our Future campaign. See pages one and two of this Heartland Link for more information.

Call-Answering Service Provides Answers to Members

Since mid-January 2008, ECI REC has partnered with the Cooperative Response Center (CRC) to meet the needs of our member at any time. The services of this professional call center have been especially valuable in the aftermath of outage-causing floods and storms.

CRC's energy dispatch services combine customer care and crew dispatch for electric utilities. The representatives are capable of answering consumer phone calls in high volume with little or no occurrence of busy signals during outages. This satisfies customers and pinpoints outage locations more quickly. CRC's dispatchers communicate with ECI REC's crews on after-hours outages from start to finish.

In 2008, CRC helped ECI REC respond to 4,170 member calls. On average, CRC was able to answer members' calls in 31 seconds, and they were able to make contact with ECI REC line crews in only 6 minutes and 30 seconds.

CRC makes extensive investments in technology, so its customers utilize the most sophisticated telecommunications systems without substantial expense. Keys to CRC's ability to provide better customer service are automatic call distribution, computer-telephone integration, and automatic number, which allow CRC to immediately identify callers and route them to the right customer service representative.

"The services of CRC help us keep in touch with our members all day, every day," said Operations Assistant Teresa Schremser. "Their quick contact time with our crews means we get members' lights back on more quickly."

2008 Outage Average Levels Out

To measure the reliability of our service, ECI REC keeps detailed records of the outages suffered by our members.

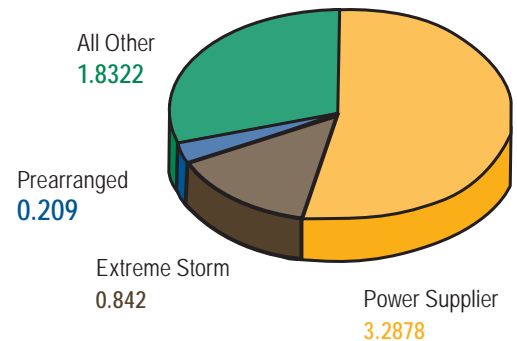
In 2007, the average time our members were without power hit a high—54.4 hours! This was due, of course to the February 2007 ice storm.

In 2008, the average number of hours our members were without power was back down to 6.1 hours per account. This is higher than our target of three hours per account, but unfortunately the weather in 2008 was also a factor in the higher outage average. Floods and tornadoes resulted in significant damage and therefore outages.

Although we'd like to, your Cooperative cannot prevent damages like those incurred during major storms and floods. We can, however, respond to issues like this as quickly as possible and work with the appropriate groups to get lights back on for our members as quickly as possible.

We can also work to prevent the outage causes we do control by implementing a good maintenance program and rebuilding old lines. For that reason, ECI REC has rebuilt 130 miles of line in the last 2 years.

2008 Average Hours of Power Interruptions Per Member



Be a Savvy Consumer: Avoid Too-Good-to-be-True Electricity-Saving Devices

These devices are sandwiched between the cooperative's meter and the meter mounting box. To install one, the member would have to clip the coop's meter seal, which would be considered unauthorized tampering with cooperative equipment and which could result in a member disconnect.

In today's economy, people are searching for ways to save money. ECI REC is aware that electricity costs may be a concern, but urges members not to resort to purchasing products that claim to reduce your home's electricity usage.

One such product claims to reduce electric usage by 50 percent. However, ECI REC has received no answer when calling the number on the web site that sells this product and has also confirmed that many of the "facts" on the fact sheet cannot be verified.

These devices actually bypass one-half the electricity used by the home and this falsification is considered theft.

To install such devices, the member would have to break the visible seal placed by ECI REC on all meters and meter enclosures. Cooperative personnel are the only people authorized to break these seals, and the discovery of a broken seal on a member's meter could result in a disconnection of services.

Members desiring more specific information on what devices to be wary of can contact ECI REC toll free at 877-850-4343.



Iowa Wind Generation Second in the Country

According to the American Wind Energy Association, 8,358 megawatts (MW) of wind generating capacity were installed in the United States in 2008. That is enough to power over two million homes. Of greater significance is the fact that Iowa now ranks second among the states with 2,790 MW of wind capacity. Texas leads with 7,116, California is third with 2,519 MW, Minnesota is fourth with 1,752 MW, and Washington state is fifth with 1,375 MW.

A separate report sponsored by the Iowa Utility Association, of which the electric cooperatives are a member, projects that, without any mandates or subsidies, Iowa could be generating 17 to 18 percent of its electric energy from renewable resources by 2025.

In order to achieve this supply, a significant investment in the Iowa's transmission system is necessary in the coming years. There is currently insufficient capacity in the high-voltage transmission lines leading from Iowa's windy regions to its population centers to support the renewable resources that could be built.

This same report also projects that attempts by federal or state government to mandate higher levels of renewable energy will result in higher electric bills for consumers. The electric cooperatives in Iowa have always opposed government mandates; we believe that incentives are a less costly way to meet social goals. A mandate that 25 percent of all electricity generated in Iowa by 2025 be renewable would increase the cost of a residential consumer using 12,000 kWh a year by \$72. A mandate of 30 percent would increase the cost of an average residential consumer by \$142 a year.

Cooperatives Support Renewable Energy to Exemplify Responsible Stewardship of Natural Resources

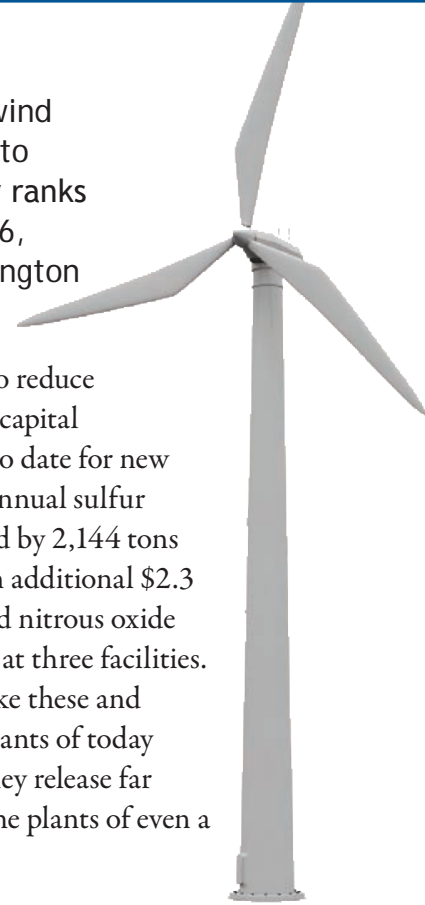
While the production of electricity will always have some level of impact on our natural surroundings, ECI REC's energy supplier, Central Iowa Power Cooperative (CIPCO), is making every effort to minimize those impacts in a cost effective manner.

CIPCO plans to purchase 42 megawatts of power from the Story County Wind Farm near Colo. With that purchase, approximately 41 percent of CIPCO's electric power will come from carbon-free sources. In addition to power from the Story and Hancock County wind farms, CIPCO gets 3 percent of its power from hydroelectric dams on the Missouri River and 33 percent from the Duane Arnold nuclear power plant in Palo.

And, over the past 40 years, CIPCO has invested significant resources to make the process of generating

electricity more efficient and to reduce environmental impacts. With capital investments of \$28.3 million to date for new emission control equipment, annual sulfur dioxide emissions were reduced by 2,144 tons at two generating facilities. An additional \$2.3 million investment has lowered nitrous oxide emissions by 918 tons per year at three facilities.

Technological advances like these and others have made the power plants of today significantly more efficient. They release far fewer greenhouse gases than the plants of even a decade ago.



High-Efficiency Water Heaters Less Than \$500

According to energystar.gov, water heating represents between thirteen and seventeen percent of residential energy consumption, making it the third largest energy end-use in homes, behind HVAC and kitchen appliances. It makes sense to choose an efficient water heater, and ECI REC offers its members energy-smart water heaters at cash and carry pricing. And, ECI also offers professional installation and warranty service on its water heaters.



Features included in these money-saving water heaters are:

- 10-year warranty
- Incoloy elements
- Foam insulation
- Heat traps
- Self-cleaning design
- Quick recovery

Members have two sizes from which to choose:

- 50-gallon: \$272.16 after rebate (includes 7% tax)*
- 80-gallon: \$458.34 after rebate (includes 7% tax)*

**Prices effective and valid for members only. All water heaters must be installed at an East-Central Iowa REC account location.*

ECI REC members who purchased new, high-efficiency water heaters and other energy-efficient appliances after the floods or tornado of 2008 now have until December 31, 2009, to claim a rebate. Disaster victims are eligible for double the rebates normally offered with the purchase of one of the below products.

Spot the Symbol Winners

Symbol was located on Page 3.

Richard A. & Doris Smith	\$10 Credit on Electric Bill
Bernard Durnan	\$10 Credit on Electric Bill
John Himmelsbach	\$10 Credit on Electric Bill
Mike & Tami Stephens	\$10 Credit on Electric Bill
Ronald Womble	\$10 Credit on Electric Bill
James Bachman	\$10 Credit on Electric Bill
Douglas Hearn	\$10 Credit on Electric Bill
Daniel Lange	\$10 Credit on Electric Bill
Susan Bawden	REC Pocket Calculator
Tim & Chris Dorsey	REC Pocket Calculator
Gary Karsten	REC Screwdriver Kit
T G Oydgard	REC Screwdriver Kit
Larry Klever	REC Screwdriver Kit
Nancy Coventry	REC Screwdriver Kit
Ralph Bentley	REC Thermometer
Sharon Stripes	REC Thermometer

Find the ♣ symbol located somewhere in this newsletter and you could win a prize. Sixteen names will be drawn from all the correct entries.

If you find the symbol, note the page number on the form at the bottom of the next page, cut it out, and send it to: Spot the Symbol, ECI REC, PO Box 248, Urbana, IA, 52345. You may mail your entry along with your electric bill payment, but remember there is a deadline! Entries for this issue must be received by April 1.

Buttermilk Syrup

Carol Noe, Brandon

2 tablespoons butter or margarine
1 cup sugar
½ cup buttermilk
1 tablespoon Karo syrup
1 teaspoon baking soda
½ teaspoon vanilla

Mix together in a pan and bring to a boil. Boil for one minute. Remove from heat and add baking soda and vanilla.

Serve on waffles, pancakes or French toast. Enjoy!

We know we have many cooks and bakers with tasty recipes in our REC membership. If you have a recipe you would like to share, please send it in to the office. If we use your recipe in the *Heartland Link*, we will send you a thank-you gift.

Classified Ads

Classifieds Free to ECI REC Members Only

FOR SALE: Tree chips, half ton pick up bed level full, you haul, I'll load, \$25 cash. Ph: 319-934-3840 after 6:00 p.m.

FOR SALE: TV and stereo stand w/glass doors, \$50; Twenty-one 3"x12"x11'3" planks, \$15 ea. Ph: 319-227-9011

FOR SALE: 2000 VW Beetle, white, 5 speed, 74K miles, new tires, rebuilt from salvaged title at 800 miles, 3rd owner, \$5000 OBO. Ph: 319-551-4410

FOR SALE: Four truck tires, Continental LT27570R18 10ply, less than 11,000 miles, \$50 ea. OBO. Ph: 319-560-0286

FOR SALE: Firewood, cut, split and loaded, \$55 per pickup load. Ph: 319-721-4631 (Vinton)

FOR SALE: Plastic tote/tank, 275 gal., 2" ball valve with metal cage/frame and metal pallet built underneath, stackable, fits in pickup bed, works great to haul water or store liquids like waste oil, very clean. Ph: 319-227-7491

FOR SALE: Large lot of Longaberger baskets, pottery and accessories, all mint condition. Ph: 319-361-0533

FOR SALE: Tractor chains for 13.6 x 38 tires, \$100. Ph: 319-443-4125

FOR SALE: 1996 Ford Escort LX, 2 dr, automatic, air, 30 mpg +, good rubber, \$1400 OBO. Ph: 319-560-9031

FOR SALE: Two like new P225/70R16 tires mounted on 16 x 8.0 cast aluminum rims, and Draw Tie Hitch, fits Dodge Dakota pickup, all for \$500. Ph: 319-310-7226

WANTED: Three point hitch parts and rear fenders for 8N Ford or similar, reasonable! Ph: 319-635-2588

WANTED: Rhubarb, yucca and asparagus plants, can trade for hosta plants or buy. Ph: 319-453-2171

Ads for the March/April Heartland Link must be received by April 1, 2009.

East-Central Iowa REC will publish non-commercial advertisements as a service to our members. All ads are free. They may be submitted by any member or employee of East-Central Iowa REC. Ads should contain a phone number, name (if desired), a brief description of items with price if applicable. Each ad is limited to maximum of 50 words. Editor reserves the right to edit or reject any ad. No ads will be taken over the telephone—please mail-in or bring your ad to the office.



Cooperative Information

East-Central Iowa REC

2400 Bing Miller Lane
PO Box 248
Urbana, IA 52345-0248

PH: 1-319-443-4343
TOLL FREE: 1-877-850-4343
FAX: 1-319-443-4359

E-MAIL: ecirec@ecirec.coop
WEB SITE: www.ecirec.coop

Hours

Monday-Friday
(closed Saturdays, Sundays and Holidays)

Office: 8:00 a.m. to 4:30 p.m.

Line Department &
Member Services Department
7:00 a.m. to 3:30 p.m.

Visa and MasterCard Accepted

We're on the web!

WWW.ECIREC.COOP



heartlandLINK

March/April 2009
Vol. 16 - Issue 02

"Heartland Link" (USPS No. 313-160) is published bimonthly for \$3.30 per year by East-Central Iowa Rural Electric Cooperative, 2400 Bing Miller Ln., Urbana, IA 52345-0248 with outposts located at 1707 First St., E. Independence, IA, 50644 and 1600 West D. St. Vinton, IA, 52349. Periodicals class postage paid at INDEPENDENCE, IA, and additional mailing offices.

POSTMASTER: Send address changes to "Heartland Link," 2400 Bing Miller Lane, PO Box 248, Urbana, IA 52345.

Phone: (319) 443-4343
Ownership: East-Central Iowa Rural Electric Cooperative
Publisher: Harry Ruth
Editor: Lisa Franck

Questions or Complaints

ECI REC strives to provide you with the best service at the lowest possible cost. But sometimes you have questions regarding your electrical service or billing, or possibly a complaint. We would like to know. Please contact us! Our office hours are from 8:00 a.m. to 4:30 p.m., Monday through Friday.

Local phone: 319-443-4343
Toll free: 877-850-4343
Fax: 319-443-4359
E-mail: ecirec@ecirec.coop

By mail:
East-Central Iowa REC
2400 Bing Miller Lane
PO Box 248
Urbana, IA 52345-0248

If you have a complaint related to East-Central Iowa REC's service, rather than its rates, and the complaint is not resolved, you may request assistance from the Iowa Utilities Board.

Des Moines local: 515-281-3839
Toll Free: 877-565-4450
Fax: 515-281-5329
E-mail: iub@max.state.ia.us

(in subject area note customer service)

By mail:
Customer Service
Iowa Utilities Board
350 Maple Street
Des Moines, IA 50319-0069

Statement of Non-Discrimination

East-Central Iowa Rural Electric Cooperative is the recipient of Federal financial assistance from the Rural Utilities Service, an agency of the U.S. Department of Agriculture, and is subject to the provisions of Title VI of the Civil Rights Act of 1964, as amended; Section 504 of the Rehabilitation Act of 1973, as amended; Veteran's Readjustment Act of 1974 as amended; the Age Discrimination Act of 1975, as amended; Americans with Disabilities Act of 1990; and the rules and regulations of the U.S. Department of Agriculture. In accordance with Federal law and the U.S. Department of Agriculture's policy, this institution is prohibited from discriminating on the basis of race, color, national origin, sex, religion, age, or disability (Not all prohibited bases apply to all programs).

Any individual, or specific class of individuals, who feels that this organization has subjected them to discrimination may obtain further information about the statutes and regulations listed above from and/or file a written complaint with this organization or the Administrator, Rural Utilities Service, Stop 1510, 1400 Independence Avenue, SW, Washington, DC, 20250-1510; or the USDA, Director, Office of Civil Rights, Room 326-W, Whitten Building, 1400 Independence Avenue, SW, Washington, DC 20250-9410, or call (202) 720-5964 (voice or TDD). USDA is an equal opportunity provider and employer. Complaints must be filed within 180 days after the alleged discrimination. Confidentiality will be maintained to the extent possible

I found the symbol ♣ on page ____.

Please note: NO ENTRIES will be taken over the phone.

Clip and mail

